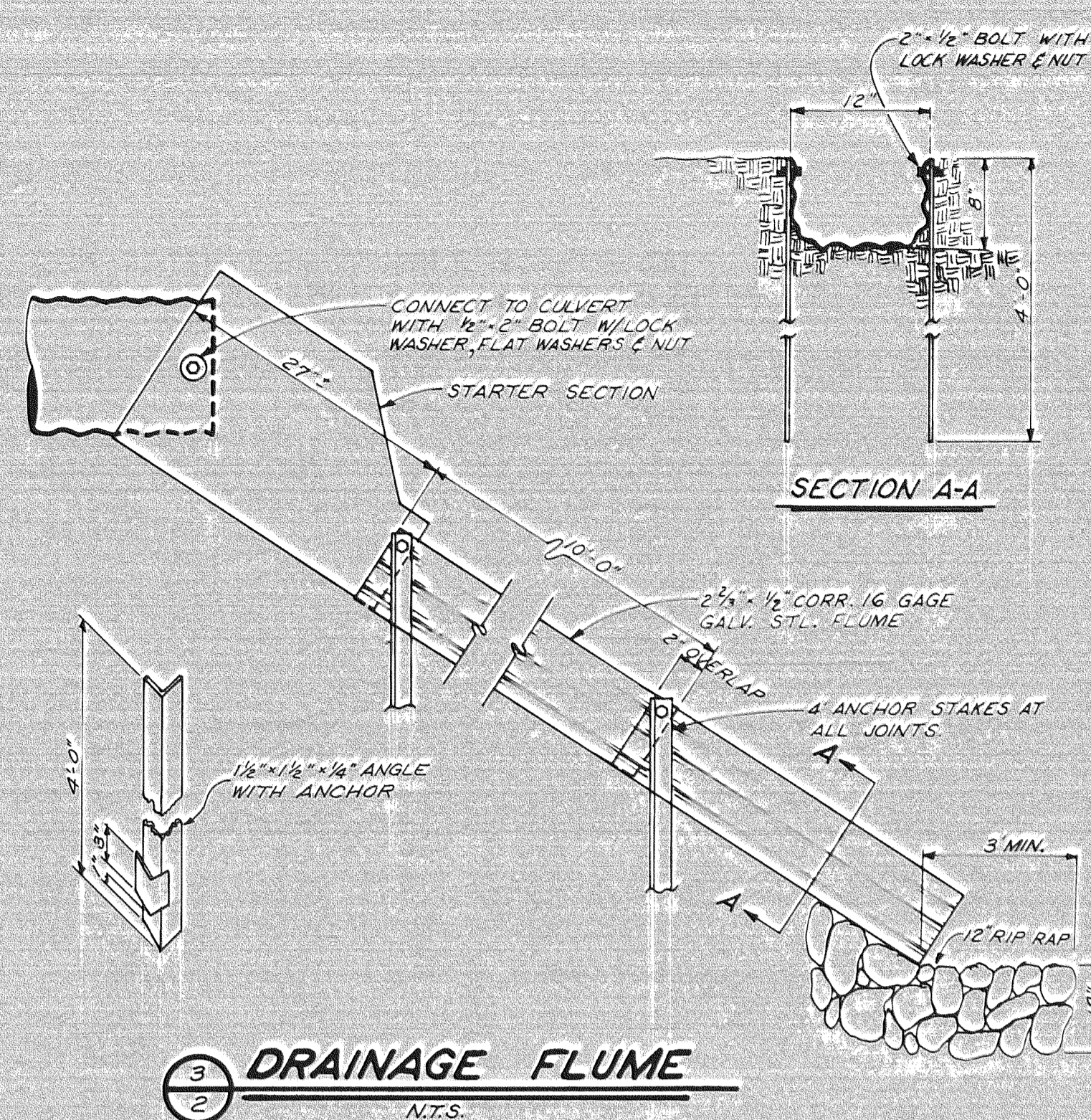
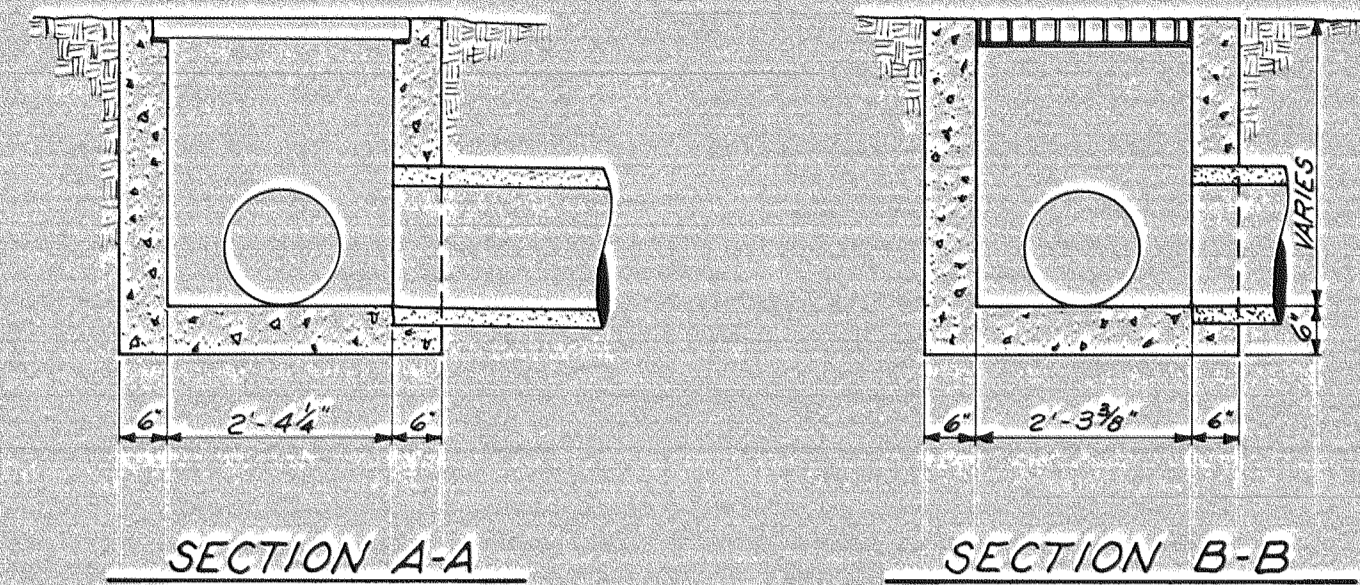
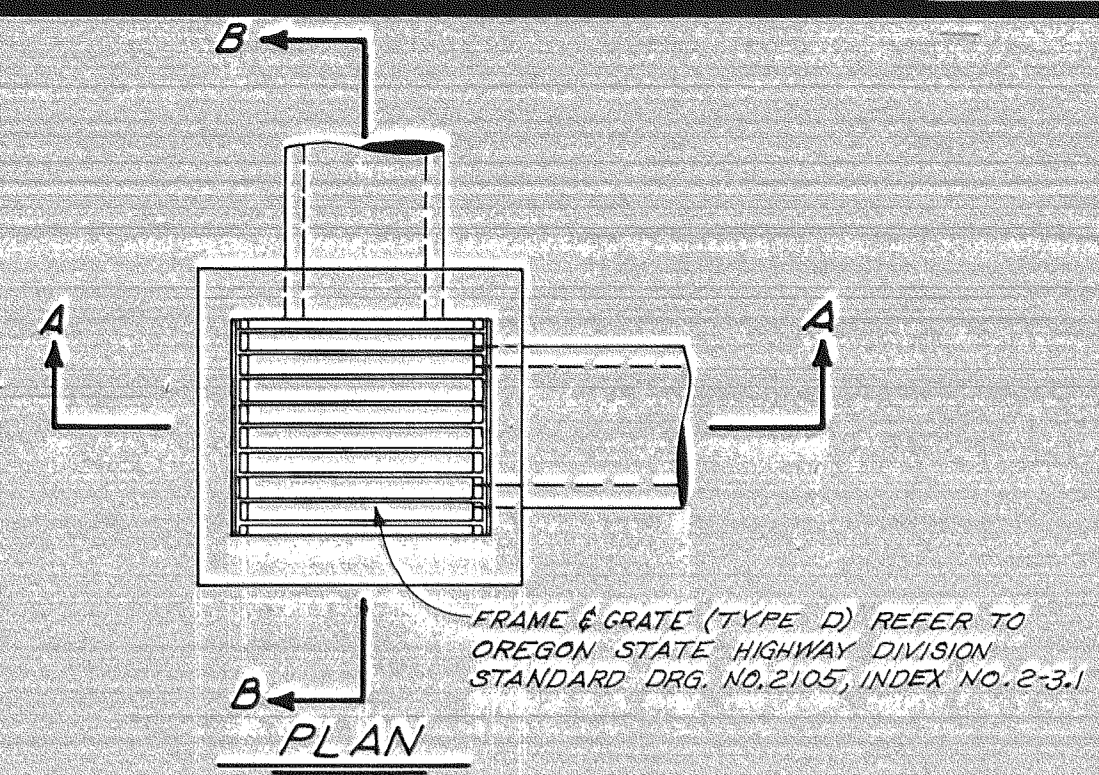


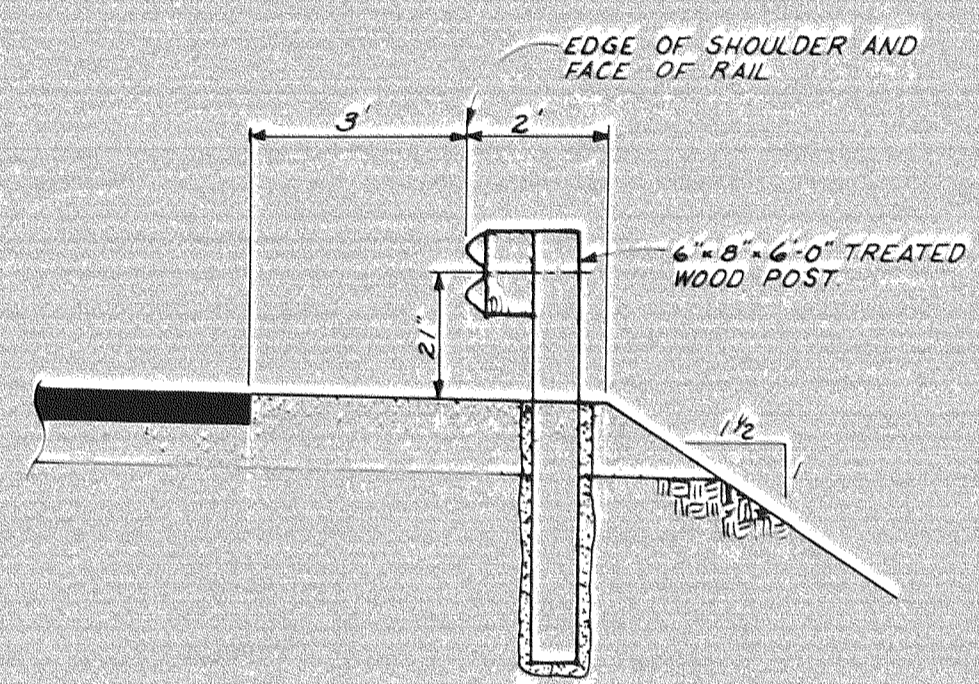
2 DITCH INLET  
1/2" = 1'-0"  
TYPE D



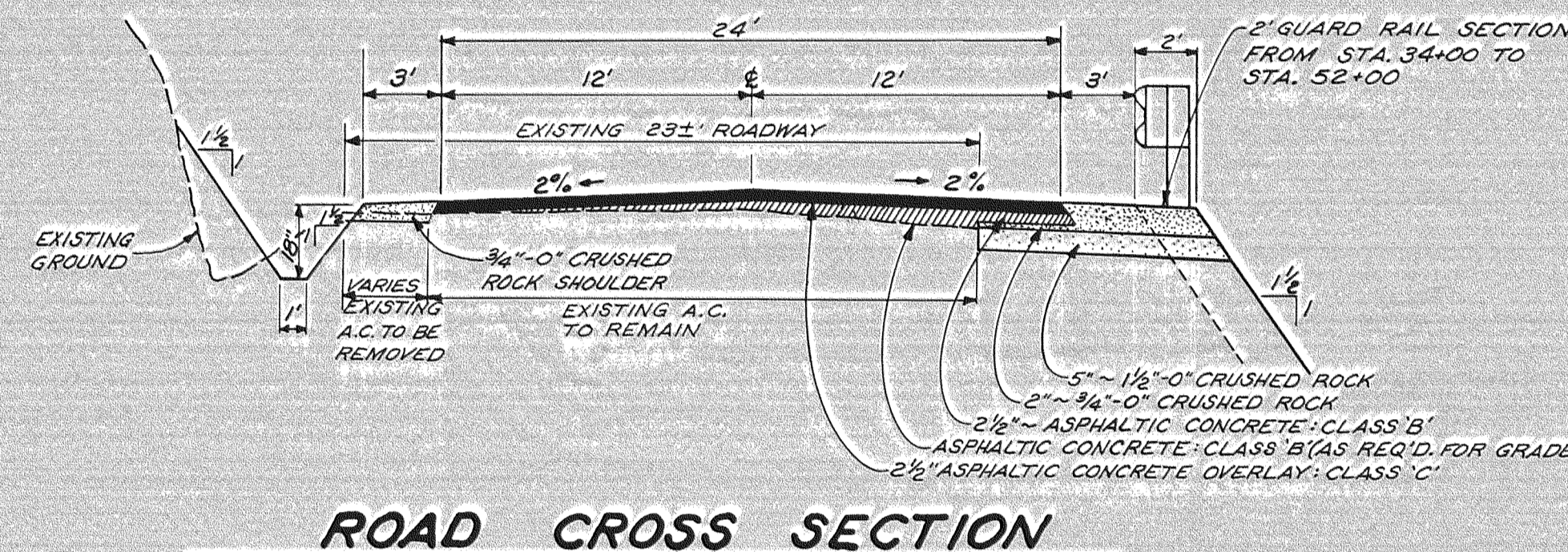
3 DRAINAGE FLUME  
N.T.S.



4 INLET MANHOLE  
1/2" = 1'-0"

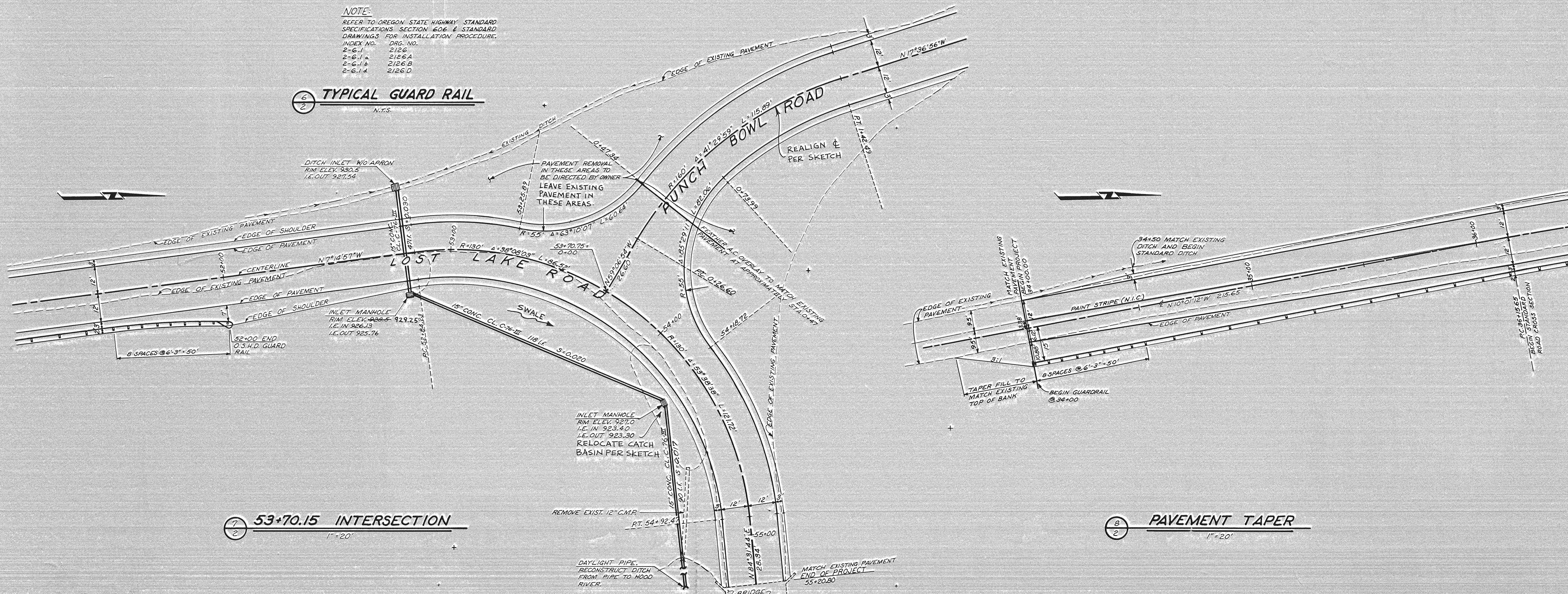


5 TYPICAL GUARD RAIL  
N.T.S.



ROAD CROSS SECTION  
N.T.S.

NOTE:  
REFER TO OREGON STATE HIGHWAY STANDARD SPECIFICATIONS SECTION 606 & STANDARD DRAWINGS FOR INSTALLATION PROCEDURE.  
INDEX NO. DES. NO.  
2-6.1 2/26  
2-6.1A 2/26A  
2-6.1B 2/26B  
2-6.1C 2/26C  
2-6.1D 2/26D



7 53+70.15 INTERSECTION  
1" = 20'

8 PAVEMENT TAPER  
1" = 20'

6.14

NO.	BY	DATE

SCALE: AS SHOWN  
DATE: NOV, 1982  
APPROVED

LOST LAKE ROAD IMPROVEMENTS  
DEE HILL SECTION  
HOOD RIVER COUNTY, OREGON  
DESIGN: D.H.S., M.E.T., J.B. DRAWN: J.B.  
CHECKED: D.H.S.

**Robert E. Meyer Consultants**  
Engineers • Architects • Planners • Surveyors  
6005 S.W. Griffith Circle  
Beverly Hills, Oregon 97005  
(503) 643-7531